



Lindahl Marine

Putting Customers First Since 1974

Our Experience...



Runs Deep

www.LindahlMarine.com

Since 1974, Lindahl Marine has provided maintenance and diving services for the nation's industries, including steel mills, power plants, municipalities, and governmental agencies.

Lindahl Marine:

- Completes all projects on time, on or below budget
- Provides exceptional service
- Has the people and resources to complete any project, large or small
- Completes projects in all weather conditions
- Has no "failed outages"
- Has a 4 Hour Emergency Response Time
- Works across the United States
- Has better, more experienced personnel

Lindahl Marine has performed miles of underwater tunnel inspections. We have pumped over 50,000 cubic yards of concrete, and removed over 200,000 yards of sediment on dams, caissons, steel mills and power plant construction and refurbishment projects.

Drawing upon this experience, Lindahl Marine has developed a staff of professionals with particular expertise in all areas of underwater problems.

*"Major cell repairs completed 'accident free.'
Lindahl Marine's underwater and topside
welding has withstood the test of time."*

Yankeetown Dock
Newburgh, Indiana



Lindahl Marine divers raising sunken tug boat



Equipped to handle anything. On site with dive gear, pumping equipment and Outage Support Trailer



Lindahl Marine diver entering icy water



Working outdoors in cold conditions. Dive Unit along with an Outage Support Trailer



Lindahl Marine diver entering water



On site for a traveling screen installation



On site working with a crane to set new intake structure for power plant



Lindahl Marine diver entering water tower

About Lindahl Marine

A Full-Service Diving Company

Our Safety Standards and Employee Qualifications:

- First Aid
- CPR
- Hazmat
- OSHA Construction Safety
- Graduates of ACDE Certified Commercial Dive Institutions
- NDT Qualified (magnetic particle, ultrasonic and dye penetrant)
- Experienced and Underwater Certified Welders
- Transportation Worker's Identification Card (TWIC) and Drug Card

Our personnel average 15 years of experience in:

- Intake and Crib inspection and maintenance
- Trash Rack maintenance, repair, installation and cleaning
- Traveling Screens repair/rebuilding in place
- Wet Well Pump inspection, maintenance and cleaning
- Condenser box butterfly valve calibrations
- Overhaul/replace soft seals on valve body or disk

Our Insurance Coverage:

In addition to our rigorous safety standards, we carry outstanding Insurance Coverage including up to:

- \$1,000,000 General Liability Insurance
- \$1,000,000 Commercial and Auto Liability
- \$1,000,000 Excess Auto Liability
- \$4,000,000 Excess Commercial Liability
- \$1,000,000 Workers Compensation Insurance, which includes USL&H Coverage and Jones Act Coverage

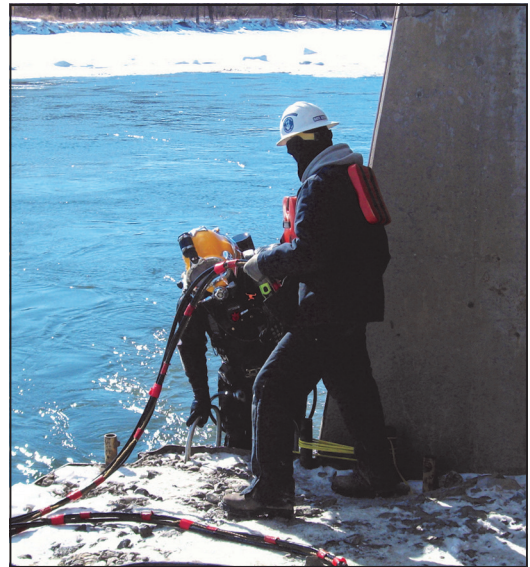
"180 foot dives performed accident free for three consecutive years."

U.S. Army Corps of Engineers
Elberton, Georgia

4 HOUR EMERGENCY RESPONSE TIME

"Lindahl Marine has responded well to short-notice, emergency work, and has an excellent safety record at our station."

Tom Rowan
Mechanical Maintenance General Supervisor
NextEra Energy/FPL



Diver exiting water

Lindahl Marine has a comprehensive list of references available on request



Underwater burning on a stop log guide



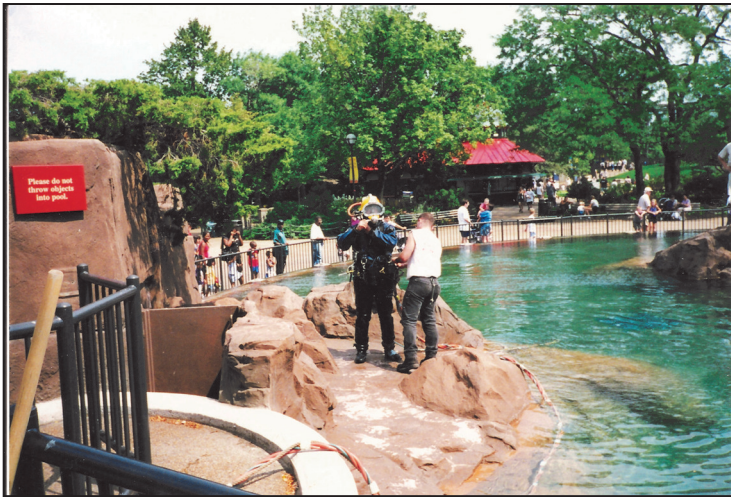
Lindahl Marine truck on site with work trailer



Typical dive truck interior layout



Lindahl Marine truck with pumping equipment



Work being performed at a zoo with wildlife in place

Lindahl Marine is a full-service diving firm with a talent for solving the most difficult underwater problems.

"With every call out, Lindahl Marine has insured a smooth and safe operation... always to our satisfaction."

Don Kilver
CIPS Power Station

**Professional staff committed to Safety,
Team Work, Integrity, and Solutions**



Preparations being made for a 4,000 foot tunnel penetration



Dock wall repairs performed by Lindahl Marine, including cap rail, new fenders, and timber installation



Lindahl Marine crews work in the worse blizzard conditions to service our customers



Divers assisting in raising sunken bridge

The Great Chicago Flood of 1992 and Lindahl Marine's Role in its Resolution

On April 13, 1992, the City of Chicago experienced the "Great Chicago Flood" when an old piling breached a service tunnel running under the Chicago River, and caused extensive and severe flooding in Chicago's downtown Loop area. It is estimated that more than 200 million gallons of water flooded basements and underground facilities throughout the Loop.

Lindahl Marine was called to assess the damage to the service tunnel. Lindahl Marine's divers first inspected the area and then cleaned out debris which had been thrown into the river in attempts to plug the hole.

Once the extent of the damage had been determined, and safety measures had been met, Lindahl Marine proceeded to place bulkheads and pour concrete in three different locations, which effectively sealed the tunnel.

Divers and other Lindahl Marine team members worked around the clock for 14 days, as Lindahl Marine played an integral role in effectively solving the city's flooding crisis. The City of Chicago awarded The Chicago Hero Award to Lindahl Marine for its assistance.

"The Chicago Flood job was one for the history books. We demonstrated - before the entire world - what the word, "partnership," really means. All of us at Kenny appreciate Lindahl's spirit of pulling together to get the job done - fast and efficiently, and most importantly, safely."

Jim Kenny
Kenny Construction Company



The Chicago Hero Award given by the City of Chicago to Lindahl Marine for its assistance.

"...The Chicago freight tunnel crisis brought a number of agencies and companies together to solve a public problem. Harza Engineering Company had the opportunity to work with most of the contributing agencies and recognizes Lindahl Marine and its staff, in particular, for its role in the resolution of that crisis."

J. A. Scoville
Harza Engineering Company



Hyperbaric Chamber

Lindahl Marine's divers, supervisors, and associates are a full service team of underwater problem solvers. From project conception to completion, we have the expertise you need.



24' dive boat



Lindahl Marine truck

Equipment

- Two Certified 54" Steel Double Lock Hyperbaric Chambers (Transportable)
- Two 5120 Air Compressors
- Submersible Pumps
- Trash Pumps
- 6" Diesel Dry Prime Pump
- Generators
- Welders
- 24' Dive Boat
- 35' Dive Boat
- 50' Executive Transportation Boat
- Hydraulic & Pneumatic Equipment
- Contaminated Environment Diving Equipment (Fully Encapsulated Dive Dress)
- Non-Destructive Testing Equipment
- Heavy Rigging Equipment
- Confined Space Entry Equipment
- Underwater Video Equipment
- Complete Line of Rigging
- Underwater Grout and Epoxy Equipment
- Air Lift Bags

"Two major Circ Water Tunnel repair projects were performed by Lindahl Marine - both during scheduled outages, completed on time!"

Robert Kulhan
Station Superintendent
Central Illinois Public Service Company



Pipeline inspection and repair project

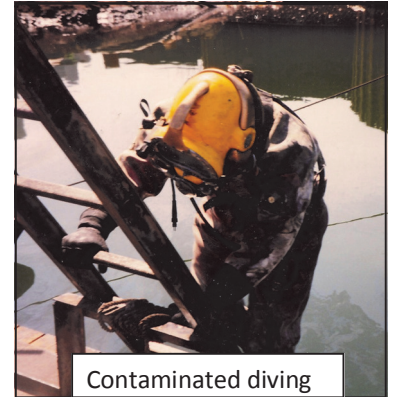
Services



Intake work at power plant

Our Specialties

- Contaminated Diving
- Multi-Crew, Multi-Station Support
- Traveling Screen In Place Rebuilding
- Condenser Box Butterfly Valve Calibration
- Overhaul/Replace Soft Seals on Valve Body or Disk
- Potable Water Diving
- Intake Pipe/Crib Inspection and Maintenance
- Steel Mill Diving
- Power Plant Diving
- Confined Space Diving
- ABS Certified



Contaminated diving

Project Evaluation

- Data Collection
- Project Consulting
- Depth Sounding
- Analyzation of Comparison Data
- Specialty Project Management

Inspection

- Zebra Mussel Inspection and Control
- Inspection of Circulating Water Lines
- Caisson Inspection
- Underwater Video Inspection
- Underwater Photography
- Deep Tunnel and Pipeline Penetrations
- Intake Inspection
- Outtake Inspection
- Tunnel Inspection
- Ultrasonic Testing
- Bridge Inspection
- Pier Inspection
- Pile Inspection
- Assist with "ROV" Intervention

Professional Captain Services

- Executive Transportation Services
- Crew Services
- Boat-handling Training
- Captained Charter Boat Services
- Executive Entertainment

Maintenance and Repair

- Traveling Water Screens
- Sluice Gates
- Trash Racks
- Pump Intake Baskets
- Butterfly Valves
- Circulating Water Lines/Tunnels
- Overhaul/replace soft seals on valve body or disk
- Pipelines
- Airlifting
- Underwater Concrete
- Underwater Welding and Burning
- Sediment Removal
- Zebra Mussel Control Systems
- Chlorine Lines
- Cathodic Protection Systems
- Pile Restoration
- Outfall Lines
- Intake Lines
- Intake Crib Maintenance and Cleaning
- Intake Modifications
- Ship Husbandry
- Potable Water Storage Tanks/Towers
- Hydroelectric Dams
- Reservoirs, Locks
- Vessel Salvage
- Pipeline River Crossing
- Tunnel Bulkheads
- Concrete Restoration
- Cofferdams

Lindahl Marine Contractors, Inc.

**740 Twin Rail Road
Minooka, IL 60447**

www.LindahlMarine.com

Phone: 815-521-3333

Fax: 815-521-1605